



GIBRALTAR *Breeze*

30 June, 2024

*Catch the latest in Gibraltar: Fish Creek, Juddville, Maple Grove...
with our dynamic newsletter covering all the town's highlights*

Treat Yourself to a Slice of History...



Reflections of our Past
Alexander Noble House Museum
Tuesdays - Sundays, 10:00 a.m. - 3:00 p.m.

Alexander Noble House: "Reflections of the Past"

Enjoy a tour of this 10-room home with many furnishings and artifacts that are original to the house and Noble Family. Come and visit

starting Mid-June to Mid October.

Tuesday - Sundays 10:00 am - 3:00 pm

Contact us at: noblehouse@gmail.com

Inside this issue:

- Noble House - see above
- Broadband Fiber Project p.2
- Alexander Noble House p. 2
- UPDATE: Sewer Interceptor Project p. 3
- UPDATE: Hill & Bluff Project p. 3
- UPDATE: Sucker Migration p. 4
- Invasive Species p. 5
- Library p. 6
- 5th Grade Field Trip p.7

Town Chair Report

Well, it looks like summer is here! Welcome back to our snowbirds, part time residents, and visitors.

The Town flower gardens are looking great, as well as all our parks and lands, even new trees were planted with the help of Gibraltar students (see page 7).

I hope everyone gets a chance to take a walk and enjoy what Gibraltar has to offer. Music venues have begun at Nobel square as well as at the beach, so come and relax for an evening. The Town Board and staff continues to stay busy with projects and plans and keeping the Town running smoothly day to day. We are very close to having the final grant money needed to purchase the Redmond property which will extend Fish Creek Park and offer additional trail activities and watershed protections. After many months of meetings and public input we are very close to a high level plan/concept for the waterfront property. The Bluff and Hillstreet project is complete and already getting a workout and the improved stormwater system is working well.

Besides being Town Chairman, I am on the executive committee of the Town Advocacy Council (TAC), which is a part of the Wisconsin Town Association (WTA). TAC focuses on implementing the legislative agenda of the WTA by lobbying our state officials. After many meetings in Madison with our lobbyists and testifying at hearings at the Capitol, over the last year, we had many successes for Towns in Wisconsin. I'm proud and honored to have been part of getting the Town aid formula changed and get more money back to Towns. Gibraltar's Aid was increased by over \$51,000 this year and into the future. I was also asked for the second year in a row to represent WTA with the National Association of Towns and fly to Washington DC to advocate for Town issues on the federal level. I care a lot about our little Town and there are many Towns, many like ours, that need to be recognized for what it takes to keep us going and what it takes to care for our citizens and retain quality of life. Thank you for having the faith in me to help keep Gibraltar the best town in Wisconsin.

Steve Sohns, Chairman, Town of Gibraltar



High Speed Internet is coming

We need YOUR help!

Go online and fill out a
"Right of Entry" form

This will give Bertram permission
to access your property



Sign up at gibraltar.gobertram.com

Please sign up by August 15, 2024 to take advantage of the great rates made available to the Town of Gibraltar.

Signing your "Right of Entry" form allows Bertram to make fiber available at your address

Signing up for service allows you to take advantage of FREE installation which includes 300 feet of FREE conduit from the road.

After the Town's contract period, charges will apply

Questions???

Please contact Bertram's customer service

OR

Call the Town offices.

Alexander Noble House Museum presents "Reflections of our Past."

Embark on a thrilling journey into history as you delve into the life of Asa Thorp, the visionary who erected the first pier between Washington Island and Fort Howard. This pier, a beacon of innovation, not only provided a safe haven for Steamers to refuel cordwood, but also dramatically accelerated their voyages. This pivotal development in transportation history fostered trade and played a vital role in the burgeoning of tourism in our region.

The primary mode of transportation by water was the true catalyst for Fish Creek's tourist boom. 1870 over 1,500 ships plied the Great Lakes, with hundreds stopping at Asa's pier to refuel. Fish Creek's refreshing air and serene beauty soon became a popular destination. Numerous lodging establishments, such as Thorp Hotel and Cottages, the Central Hotel, and Welcker's Resort and Casino, followed by three general stores and three piers, are all part of the history we share.

This year's exhibit, "Reflections of our Past," offers a captivating journey back in time and displays life in Fish Creek from the late 1800s to the early 1900s. It also pays tribute to Alexander Noble and his remarkable achievements. Learn about his daughter, Ula, and granddaughter, Gertrude Howe, who defied societal norms as determined pioneers in male-dominated fields.

Come one, come all, and experience the unique opportunity to Step Back in Time with us at the Alexander Noble House Museum. **Docent lead walking tours begin June 29, 2024 at 9:00am, every Saturday & Wednesday.**

- Meet at Gibraltar's Old Town Hall: 4176 Maple Street, Fish Creek, WI

For more information: <https://www.historicnoble.org/museum>

 Follow us on Facebook at [Gibraltar Historical Association](https://www.facebook.com/GibraltarHistoricalAssociation).

Catch The "Breeze" Via Email

You can catch the "Breeze" at the end of the month in March, June, September and December. **June and December's newsletters will be available online only. Sign up to receive them here: <https://gibraltarwi.gov/subscribe-to-updates/> and check the "newsletter" box, or go to our newsletters page and download**

CONTACT US

-  clerk@gibraltarwi.gov
-  920-868-1714
-  www.gibraltarwi.gov
-  PO Box 850, Fish Creek, WI 54212

Hill and Bluff Project UPDATE

The project at Hill Street and Bluff Lane is complete with the exception of the installation of street lights.

The project was necessitated by the extreme disrepair and poor drainage of the storm water system. Water run off from the bluff flooded yards, driveways and the street, not only creating a mess, but allowing contaminated runoff to enter the bay. The new construction has addressed and resolved this challenge; run off is now contained in a catch basin where it is cleansed of phosphates by a vortex unit before being allowed to enter the bay.

This project acted as a test pilot for the Town of Gibraltar, assessing our ability to fix our infrastructure while maintaining the quaintness and charm of Fish Creek.

BEFORE



AFTER



From: The Administrator's Desk

Sewer Interceptor UPDATE

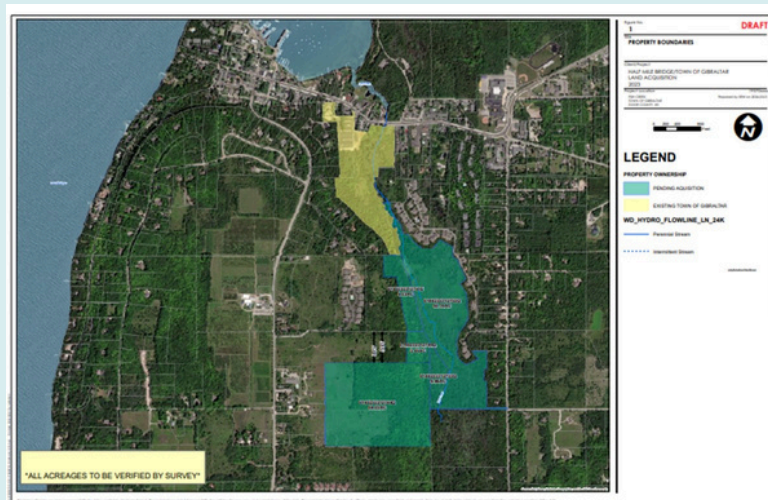
Phase One is complete!

The sewer interceptor has removed a number of holding tanks from the upper bluff. This safeguards the groundwater and watershed from possible groundwater contamination.

Developers are building several duplexes and residential homes on the bluff - housing for the "heroes" who provide needed services to the town, such as teachers, firefighters, medical personnel, etc.

The Town continues to actively fundraise to acquire the 125 acre park. The town is still accepting donations towards its goal of the \$1.5 million necessary to acquire the land. (see p. 4)

Your contribution can make a difference!



Above map shows Half Mile Bridge/ Town of Gibraltar Land Acquisition.

Pending acquisition shown in jade outline

Please take note:

NEW Town Office Hours: Monday through Thursday: 10:00am - 3:00pm AND Friday 8:00am - Noon

Dock Hours: for current hours click: fishcreektowndock.com

Airport Information click: <https://gibraltariwi.gov/ephraim-gibraltar-airport/>

Visit Fish Creek (visitors center) 10:00am - 4:00pm daily through Labor Day weekend

Recycling May through October: 1st and 3rd Saturdays 8:00am - Noon / for more info click: [Recycling](#)

Tracking Sucker Migration in the Waters of Fish Creek

Courtesy of Linda Merline



In April of 2024, through the partnership and efforts of Karen Murchie, director of Freshwater Research at the Shedd Aquarium in Chicago, and U.S. Fish and Wildlife Service of Green Bay, 29 of our own Fish Creek White Suckers were fitted with acoustic transmitters. These internal transmitters will track where these adult suckers are spending their time when they aren't here spawning in Fish Creek. Each tagged sucker has also been marked with a yellow loop tag to make it easy for others that may encounter the fish to identify that it is a fish that is being tracked.

Dr. Murchie says suckers are the superheroes of the Great Lakes, contributing in numerous ways to its ecosystem. She loves studying these superhero fish in Door County, because of the wonderful community support she receives here. Next spring when the suckers come into the creek to spawn, we will be watching to see how many of these tagged fish find their way back to little Fish Creek.

Next time you are in the neighborhood of the Hwy 42 culvert, stop and check out the fish ladder, which allows the suckers to travel back and forth.

Learn more about Dr. Murchie and her work here:

[Dr. Karen Murchie](#)

Learn more about sucker research here: [Great Lakes Fish Migrations](#)

🌿 Fish Creek Park Expansion Land Acquisition 🌿

When your legacy is important to you...

Give the gift that lives on 🌳

Imagine 125 acres of pristine parkland that will provide Fish Creek residents and visitors a space to relax, play, and immerse themselves in the breathtaking beauty of Gibraltar. This is your opportunity to be a part of something extraordinary.

🌟 Join the Movement...Join your Neighbors...Make a Difference 🌟

With your generous donation, you can help secure this land for future generations to cherish.

Choose your level of commitment:

🌿 Land Guardian - \$250-\$749

🌳 Land Patron - \$750-\$1499

🌲 Land Supporter - \$1500-\$4999

🌴 Conservation Defender - \$5000-\$9999

🏆 Conservation Champion - \$10,000 – “Sky’s the Limit”!

🌍 Your Legacy Matters

📞 Donate Today! Call (920) 868-1714 or visit our website at <https://gibraltarwi.gov/donations/>

🌿 **Make a Difference. Leave a Legacy.** 🌿

With your help we can enjoy our new park this summer

Invasive Species Spotlight: Japanese Barberry

courtesy of Parks & Lands

With its bright red color, dense foliage, and low-growing characteristics, the Japanese Barberry (*Berberis thunbergii*) and related cultivars are sometimes sold as landscape and ornamental shrubs in commercial plant nurseries.

You'll recognize the Japanese Barberry as a dense, spiny shrub. Its appeal is due, in part, to its shade and drought tolerance, and low-growing height. On average, the Japanese Barberry grows 2 to 3 feet tall, but can grow up to 6 feet in height. The plant flowers in May, developing bright red, oblong, egg-shaped berries from August through the winter, and has small, oval green leaves that can turn reddish brown in the fall.

The reason the Japanese Barberry is listed as an invasive species is due to how quickly it spreads, primarily through seeds via birds. At this point, not all cultivars are classified as invasive, but studies are still being done to determine which cultivars pose the most risk, mostly due to this aggressive seed production.

Like many non-native shrubs, the Japanese Barberry leafs out early, retains its leaves late into the fall and forms dense thickets, shading Native plants. It also alters soil pH, nitrogen levels, and biological activity in the soil.

White-tailed deer avoid browsing barberry, preferring to feed on native plants, giving barberry a competitive advantage. There are also studies that link higher instances of Lyme Disease in areas with Barberry thickets, which can be a humid breeding ground for deer ticks.

To control the spread of Japanese Barberry, plants can be pulled out or dug up. It is easiest to do this in early spring. Be sure to remove all roots and watch for re-sprouts. Cutting without using an herbicide will result in re-sprouting. If you are not able to remove the entire plant, mow or cut larger plants before seed set. For additional information and resources:

<https://doorinvasives.org/>



there's an app for that!

**Unsure if a plant is an invasive species?
Looking for an alternative to replace an invasive plant?**
The answer can be in the palm of your hand with these invasive species apps available on your smartphone or device!

Landscape Alternatives | iOS & Android
Available through the App Store, this app focuses on plantspecies that are used ornamentally and have become invasive in at least part of the Midwest.

Great Lakes Early Detection Network (GLEDN) | iOS & Android

This invasive species early detection and warning system app for the Great Lakes region lets users add their own invasive species findings. Findings are then verified and combined with the reports from other users, and used to send customized early detection alerts.

Discover the World at the Town of Gibraltar Library

Bittersweet Bookies Book Club

2nd Wednesdays at 1:30pm

In-Person & On Zoom

- June 12: “20 Years Later” by Charlie Donlea
- July 10 “Combat & Campus: Writing through War” by Annette Grunseth
- August 14: Biographies of your choosing

FUN! Every Month:

June 1: Summer Reading Program Begins

READ BOOKS / WIN PRIZES!!!

June 18, 11am: Maps & Your World - A talk covering the history of Door County maps and how they show constant change

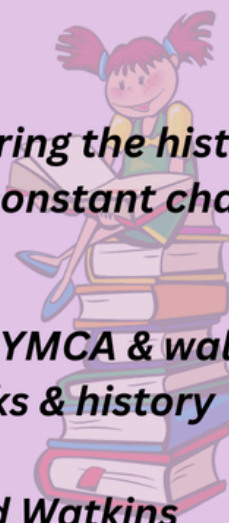
July 8, 10am: Planetarium Visit

July 15, 11am - 3pm: Scavenger Hunt - Begin at YMCA & walk through Fish Creek investigate town parks & history

THERE ARE PRIZES!!!

August 7, 2pm: Close-Up Magic Show with David Watkins

APPROPRIATE FOR ALL AGES



Wednesdays in July

At Noon...

Children's Story Time



Always: FREE Craft Kits

all month long

- **June: compass Making**
- **July: Knot Tying**
- **August: Cipher Wheel**

Fish Creek Library at Settlement Farmers Market:

June 26, July 24, August 14

9:30am - 1:30pm



having FUN while learning...

How great is it to be a 5th grader in the Town of Gibraltar? Let's take a look....

On a recent fieldtrip, 5th grade students from Gibraltar School walked to Fish Creek Park and enjoyed a morning of outdoor activity. They used nets to find and identify macroinvertebrates in the creek. They planted native black cherry trees to shade the creek to keep the water cool, which helps maintain the dissolved oxygen for fish and invertebrates to breathe. They pulled invasive garlic mustard and dames rocket that they noticed were choking out native plants and they discovered there was more to Fish Creek Park than meets the eye when we hiked the Butterfly Trail for a view of the bluff and the trail that will connect to the new extension of the park. ***The most important lesson: working together the students could impact their the environment, keeping it healthy.***

Fast forward to the afternoon: the students went indoors and took a step back in time to the late 1800's with a tour of the Noble House. The docents told stories about how Asa Thorp founded the town of Fish Creek and how many of the buildings built back then are still being used for homes and businesses. The docents showed them how the tasks of everyday life were done by hand and then compared these tasks to the modern time-saving devices we use today. They discussed the vital role that water transportation played in helping the Town grow and develop into the tourist destination that it is today. The students left with a deeper understanding of the past and how it connects to the present and the future, encouraged to be caretakers of both nature and our past. The field trip concluded with a visit to Not Licked Yet with custard for everyone provided by the Friends of Gibraltar.

As in all things, "it takes a village"...This field trip was made possible through the collaboration of Laurie Buske, Chairperson, Town of Gibraltar Park & Lands Committee and Program Director, Gibraltar Historical Association; Linda Merline, Volunteer Leader of the Fish Creek Watershed Study/Water Action Volunteers Group and Chairperson, Town of Gibraltar Plan Commission; and Vinni Chomeau, Coordinator, Friends of Gibraltar; Teachers: Mr. Thomas and Mrs. Weitman; Volunteer Docent, Lynn Hermann; and Volunteers: Dave Lea and Patty Dixon. This field trip helps fulfill The Fish Creek Watershed Plan's Outcome 3.4: A Multi-Generational Partnership will Support a Healthy Fish Creek.

NOTE: This year the macro invertebrate study could not be held in its usual wetland spot on the boardwalk crossing of the creek in Fish Creek Park due to the flooding there. The owner of Not Licked Yet, Mr. Clay Zielke, generously agreed to let the activity take place at the portion of the creek that runs through his business property. Thank You, Mr. Zielke.

