

# Green Tier Legacy Communities Uniquely Wisconsin



# Green Tier Legacy Communities



Map current of 5/7/19



# Charter Partners





*"I enjoy learning from other members and I appreciate the opportunity to partner on grant applications."*

*"Member meetings provide a good chance to meet staff and elected officials from other WI communities and allows for the exchange of ideas and to hear about what works and what does not."*

*"Direct access to DNR and NGO staff"*

*"We value the ability to learn about best practices, pilot programs, and green initiatives in other communities that we can consider trying in our own city."*



# Benefits of belonging to GTLC



- Provides opportunities for collaboration and information networking with peer cities, villages, towns and counties
- Access to experts, through support of participating NGOs
- Sustainable Strategies Webinar Series

# Benefits of belonging to GTLC



- Direct access to DNR expertise and technical assistance – “Single Point of Contact”
- Creates a forum to be recognized for achievements
- Potential to receive ‘tie-breaker’ grant point considerations
- Joint efforts on grant applications



# What are the costs of belonging to GTLC?

- **FREE!**
- Adopt a Resolution
- Baseline Assessment
- Annual Reporting
- Engaging with the network



# What does Legacy Community Engagement look like?



- Utilizing the Sustainable Strategies Scoresheet for your baseline assessment and tracking improvements.
- Sharing information, strategies, opportunities and even obstacles you've encountered as you work to advance community goals.
- Complete an annual report on the progress made in achieving your communities sustainability goals.
- Participate!

# Additional Benefits



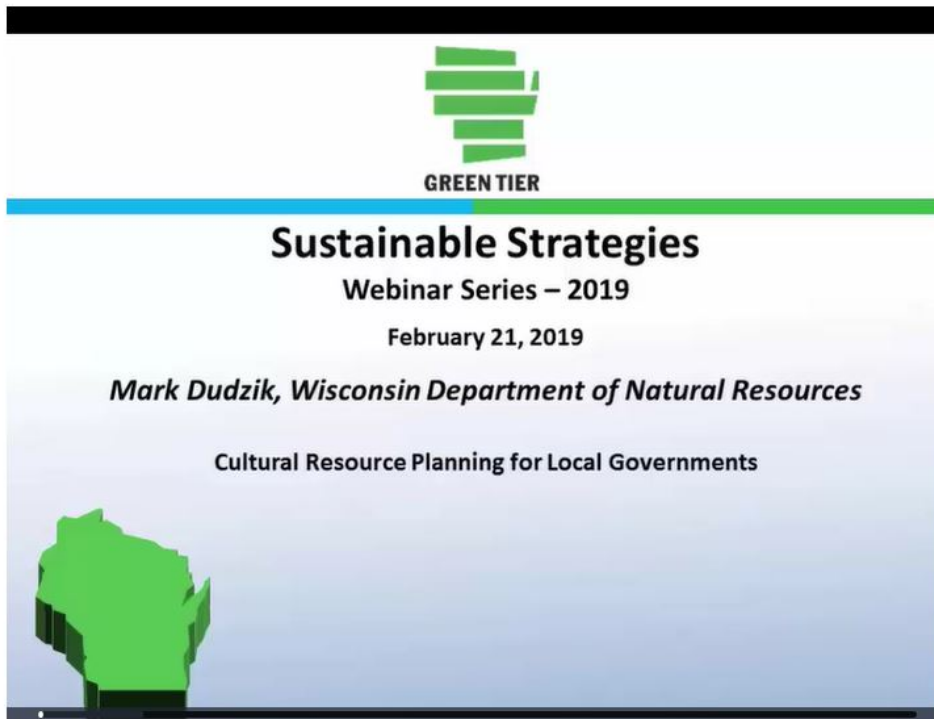
## Sustainable Strategies Webinar Series



The Sustainable Strategies Webinar Series is a free monthly webinar produced for Municipal professionals. Join us every third Thursday from 12pm-1pm for presentations on timely sustainability topics. Support is provided by [League of Wisconsin Municipalities \[exit DNR\]](#), [1000 Friends of Wisconsin \[exit DNR\]](#) and the [Wisconsin Counties Association \[exit DNR\]](#).

### Don't miss a webinar!

You can easily [register](#) for the next webinar.



### Green Tier

#### Apply

to become a Green Tier participant.

#### Related links

- [Participants and applicants](#)

#### Resources

- [Sustainable Strategies](#)
- [Green Tier Legacy Communities Executive Committee](#)
- [Sustainable Strategies Webinar Series for Municipal and County Professionals](#)
- [2019 Funding Calendar](#)
- [Success stories](#)
- [Presentations](#)

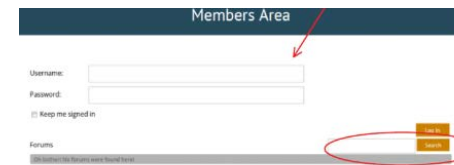
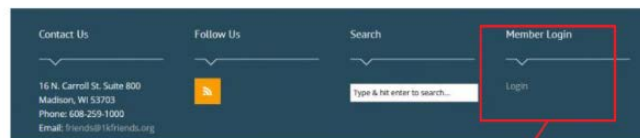
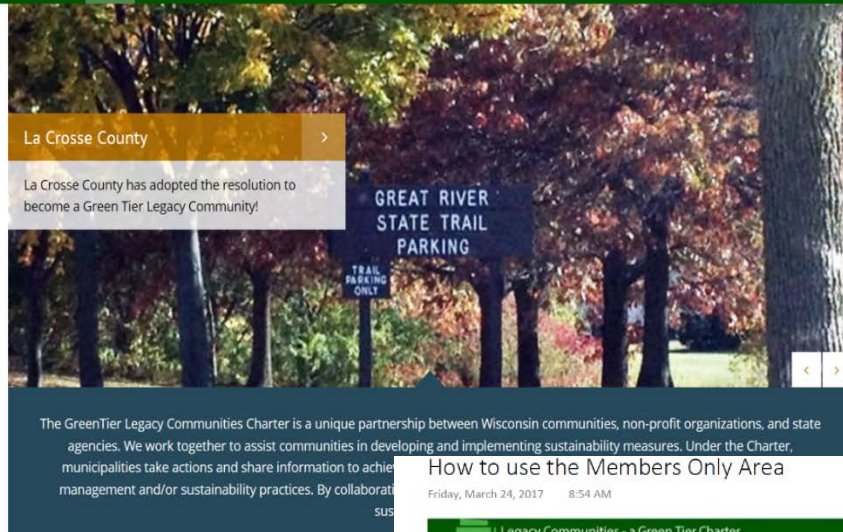
#### DNR contact

[Will Erikson](#)  
101 S Webster St - OB/7  
PO Box 7921  
Madison WI 53707-7921  
[608-267-3763](#)

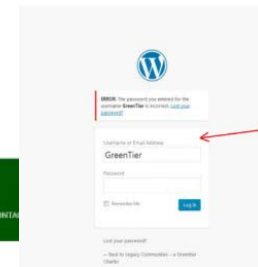


# Sustainable Strategies Webinar Series

# Additional Benefits



Come back to this screen anytime to search the forum. Please note - you will only be able to pull up searched items if you are logged in. This is a private Forum.



If you forget your password, you can click on Lost your password and it will be emailed to the person in your community/org who is set up as the user.

## GTLC Members Only Access Site

# The Sustainability Strategies Scoresheet



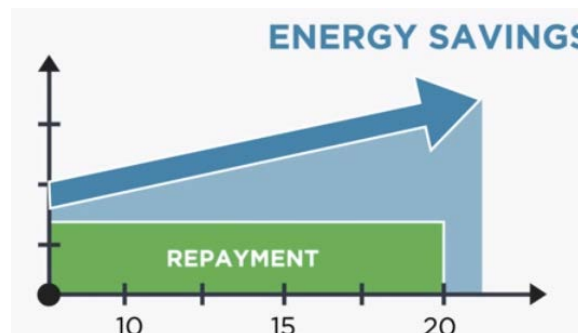
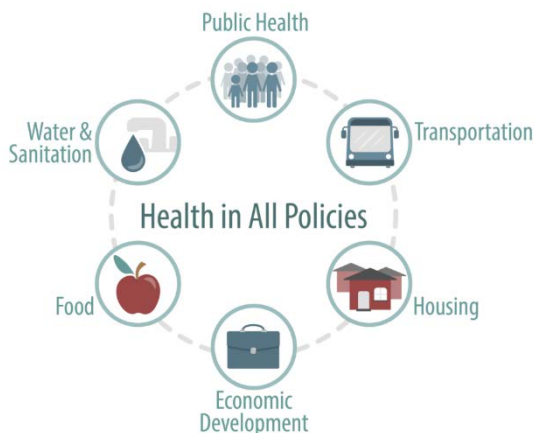
- The Sustainability Strategies Scoresheet is a baseline assessment tool and ever evolving list of best management practices to track your community's progress since entering the program and to help members measure and report out on their environmental accomplishments!

 <b>Sustainability Strategies Scoresheet</b>		     						
This Sustainability Strategies Scoresheet is provided for members to track sustainability management strategies in transportation, energy, land use, water, waste, and health. This scoresheet is intended to be dynamic and flexible and will provide structure for annual reporting. In the spirit of continuous improvement toward superior environmental performance, suggested revisions to this scoresheet are always encouraged. (Approved May 2018)								
TRANSPORTATION DEMAND MANAGEMENT:		(Insert Community Name) Scores						
Transportation demand management strategies aim to reduce GHG emissions and VMT by influencing change in individual behavior. These strategies encourage walking, bicycling, and transit as modes of transportation within a community and seek to curb the number and length of trips by vehicle.		2014	2015	2016	2017	2018	2019	
<b><u>Bicycle and Pedestrian Programs/Projects</u></b>								
Require bike parking for all new non-residential and multifamily uses.		0	0	0	0	0	0	
Set standards for placement and number (as function of intensity of use) for bike parking spaces.		0	0	0	0	0	0	
Commuter bike routes identified and cleared.		0	0	0	0	0	0	
League of American Bicyclists certification. (Bronze 5, Silver 7, Platinum 10)		0	0	0	0	0	0	
Funded and operating SRTS program (or functional equivalent) covering at least 10 percent of students.		0	0	0	0	0	0	
Conduct annual survey of students' mode of transport to school.		0	0	0	0	0	0	
<b><u>Employer-Based Programs</u></b>								
Require large employers seeking rezoning to set a price signal (cash-out or charge).		0	0	0	0	0	0	
Require large employers seeking rezoning to provide subsidized transit.		0	0	0	0	0	0	
Require large employers seeking rezoning to provide a TDM plan that would reduce trips by 20 percent over business as usual.		0	0	0	0	0	0	
<b><u>Traffic Volume</u></b>								
Track VMT or traffic counts and report on efforts at reduction (including those on this list).		0	0	0	0	0	0	
Eliminate parking minimums from non-residential districts.		0	0	0	0	0	0	
Set parking maximums at X per square feet for office and retail uses.		0	0	0	0	0	0	
Scheduled transit service at basic level (hour peak service within half-mile of 50 percent of addresses).		0	0	0	0	0	0	
Scheduled transit service at enhanced level (half-hour peak service within 75 percent of addresses).		0	0	0	0	0	0	

# GTLC Projects



- GTLC Work Groups
  - Funding & Collaboration
  - Communications & Program Improvements
- Legacy Communities Alliance For Health
- Property Assessed Clean Energy





**For more information please contact:**

***(insert presenters name)***

**Or**

**Will Erikson**

**Wisconsin Department of Natural Resources**

**Business Support Coordinator – Green Tier**

**[William.Erikson@Wisconsin.gov](mailto:William.Erikson@Wisconsin.gov)**

**606-267-3763**

**<http://greentiercommunities.org>**

**<https://dnr.wi.gov/topic/GreenTier/Participants/LegacyCommunities.html>**